

DESCRIPTION

Rain Jacket – Is a loose fitting, straight cut, hooded jacket constructed from clear vinyl. Front panels finish at mid thigh with a centre front plastic chunky open-ended yellow zipper. Coat back hem curves from mid thigh at side to knee length at centre back. Rain jacket back is screen-printing with wheat and canola pattern as a placement print and the bottom of the panel. The print is embellished with random topstitching and hand stretching in shades of yellow. Sleeves, elbow joints and hood are joined at the seams with yellow and reflective silver woven tape and raw edges are bound with reflective silver binding.

Swimmers – Swimmers are a full piece suit with a bikini line leg cut and full-length sleeves. A 'V' neck is repeated with 3 layers of rectangle sections of digitally printed Ponte knit. Swimsuit front has circular cut outs at side waists. Ends of the sleeves are bound with ponti knit and have a triangle of power mesh knit pointing towards the arm. Back is open low cut curve finishing in line with hips with 9 straps of differing widths that woven over the centre back.

Hat – Traditional bucket hat shape constructed from digitally printed Ponti knit fabric reinforced with interfacing and bound with silver binding tape around brim and raw edges of crown and brim join.

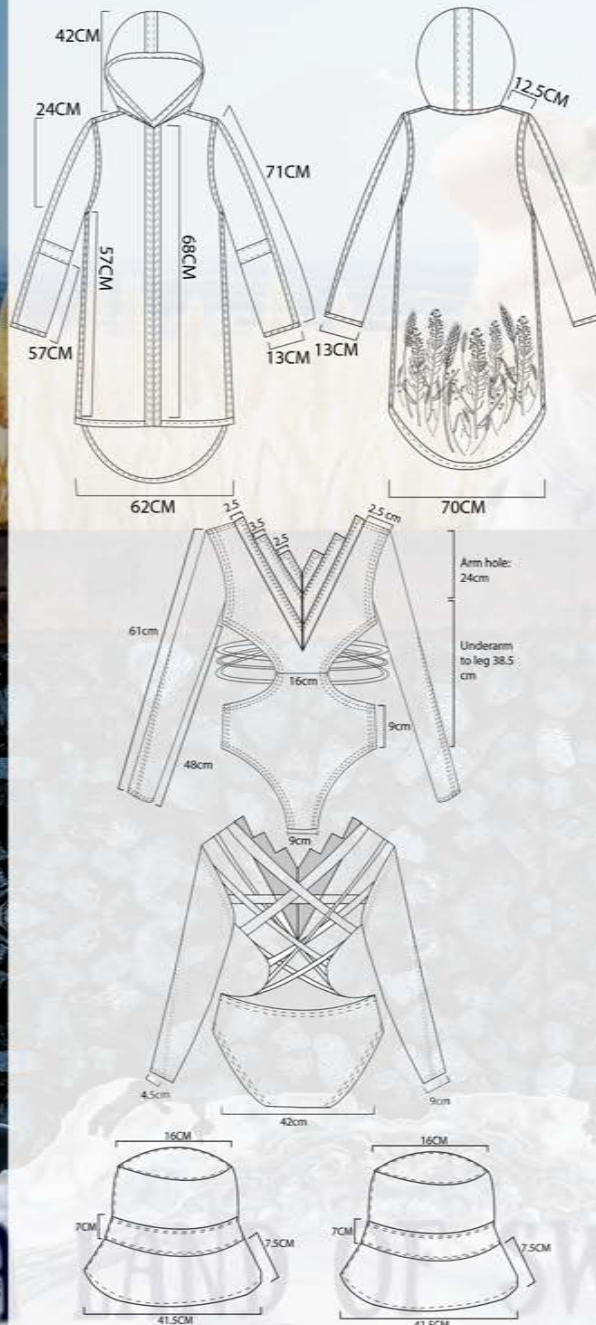
Acknowledgements

Patterns – made with teacher assistance
Digital printing – Digital fabrics Sydney

COMMERCIAL PATTERN



PRODUCTION DRAWINGS



PATTERNS KEY

Coat

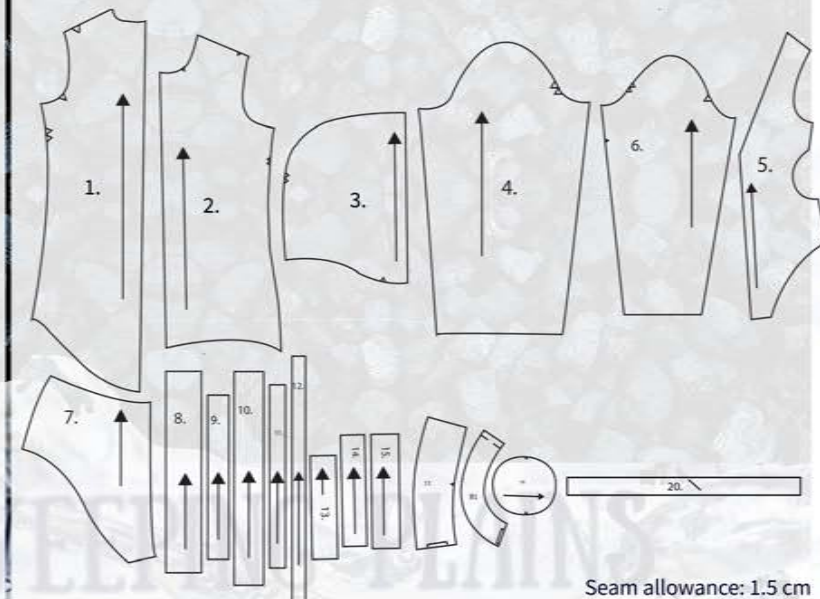
No.	Piece	Cutting instructions
1.	Back	Cut 1 of fabric on fold
2.	Front	Cut 2 of fabric
3.	Hood	Cut 1 of fabric
4.	Sleeve	Cut 2 of fabric

Swimmers

No.	Piece	Cutting instructions
5.	Front	Cut 1 on fold of fabric
6.	Sleeves	Cut 2 of fabric
7.	Back	Cut 2 of fabric
8.	Strap 1	Cut 2 of fabric
9.	Strap 2	Cut 2 of fabric
10.	Strap 3	Cut 2 of fabric
11.	Strap 4	Cut 2 of fabric
12.	Strap 5	Cut 2 of fabric
13.	Outside 'V'	Cut 2 of fabric
14.	Middle 'V'	Cut 2 of fabric
15.	Inner 'V'	Cut 2 of fabric
16.	Ponte knit Triangle	Cut 2 of fabric

Hat

No.	Piece	Cutting instructions
17.	Brim	Cut 2 of fabric and interfacing on fold
18.	Crown	Cut 1 of fabric, interfacing and lining on fold
19.	Top	Cut 1 of fabric, interfacing and lining
20.	Band	Cut 1 of fabric and lining



Seam allowance: 1.5 cm